

Riverside & Sedamsville

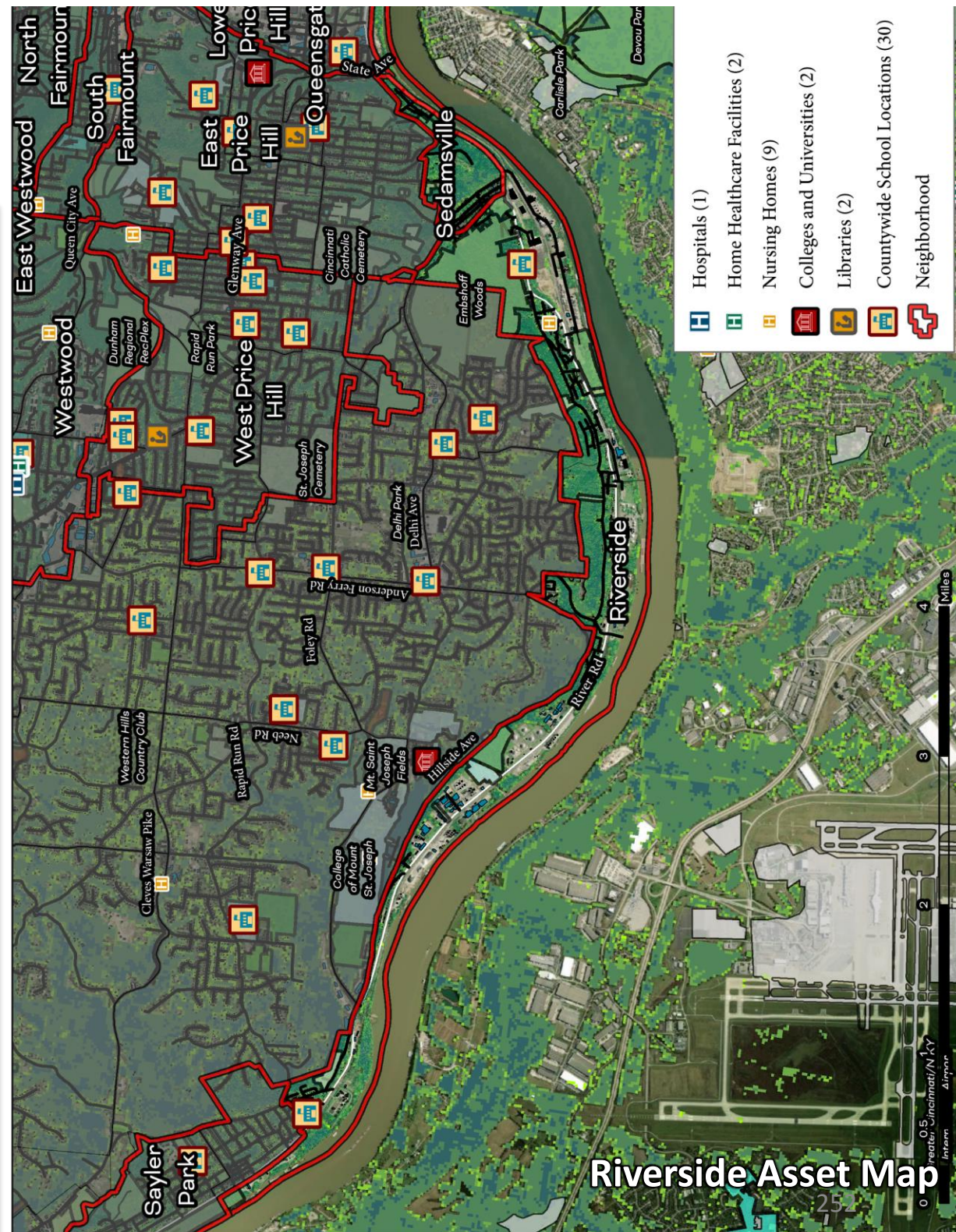
Cincinnati Neighborhood Profile

Riverside is a predominantly White neighborhood (83.3%) with a population of 2,346 residents. The neighborhood has its own community council (Riverside Civic & Welfare Club) and is not a part of a development corporation. Riverside's most recent community plan is the Riverside Strategic Community Plan (2002).

The average life expectancy in Riverside West (near Saylor Park) is 78.7 years, (ranked 9th highest out of the neighborhood assessed). The average life expectancy in Riverside East (near Sedamsville) is 63.7 years (ranked 47th). There is moderate to high disease prevalence, including cancer (8.1% of residents, ranked 47th), heart disease (11.9%, ranked 47th), and asthma (15%, ranked 43rd). Of Riverside residents, 20.3% live with a disability (ranked 44th) and 18% lack health insurance (ranked 40th).

Riverside ranks 45th in land in parks and greenspaces (3.4%, ranked 45th). The neighborhood ranks 11th in Heat Island Exposure with a heat index of 0.13. Exposure to built environmental hazards is low to moderate compared to the other neighborhoods assessed, including moderate traffic exposure, possible lead paint exposure, proximity to water pollution sources, and exposure to diesel particulates in the air.

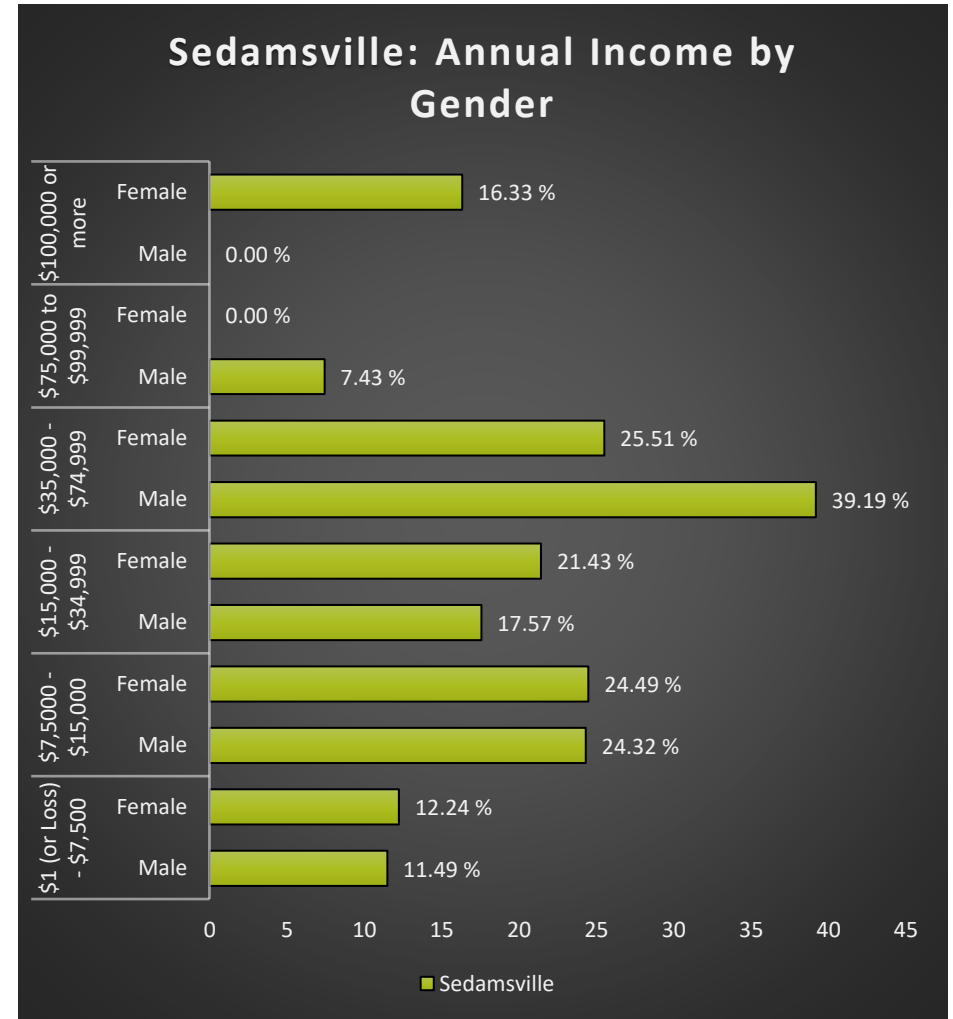
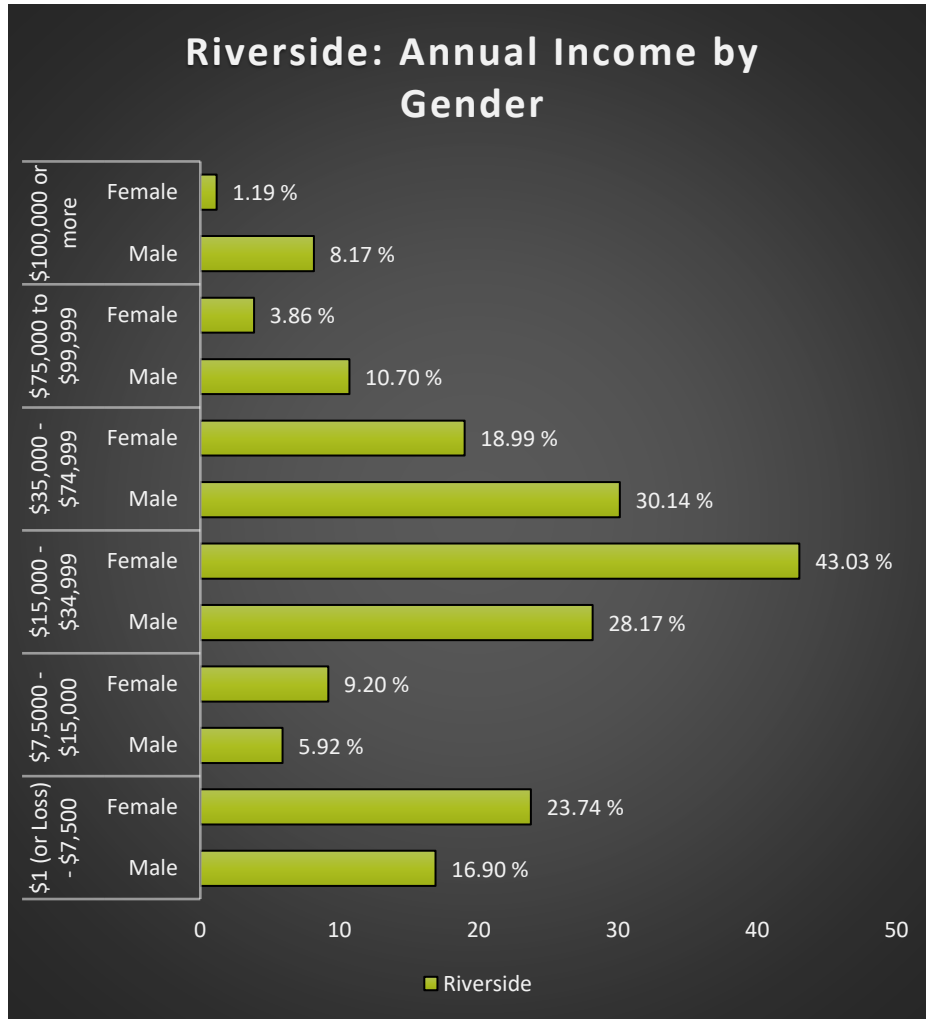
Riverside has an educational attainment index of 34. In Riverside West 18.2% of residents live in poverty (ranked 17th) and 6.6% of households receive SNAP benefits (ranked 4th%). In Riverside East 30.3% of residents live in poverty (ranked 31st) and 33.9% of households receive SNAP benefits (ranked 33rd). The majority of housing units are renter-occupied (63.3%, ranked 24th) and 29.9% of renters and 23.6% of homeowners spend 30% or more of their income on housing costs (ranked 29th and 37th, respectively). The neighborhood ranks 23rd in vehicle access and 7.6% of residents lack a vehicle.



Riverside Asset Map

Riverside & Sedamsville

Cincinnati Neighborhood Profile



Riverside & Sedamsville Notable Indicators		
Riverside East Life Expectancy	Riverside West Life Expectancy	Percent Land in Parks and Greenspaces
63.7 years (Ranked 47th highest)	78.7 (Ranked 9th highest)	3.4% (Ranked 45th highest)

Riverside & Sedamsville

Cincinnati Neighborhood Profile

People			
Indicator	Rank	%	# of Persons
Population	-	-	2,346
Persons over 65	43	17.6%	414
Persons 17 and Under	13	18.5%	434
Children Living w/ Grandparents	6	0.0%	-
Race/Ethnicity:			
Black	-	8.9%	209
white	-	83.3%	1,955
Asian	-	0.0%	-
Other	-	7.8%	182
Latinx	-	1.6%	37
Persons 5 and Older in Households w/ Limited English Ability	29	0.9%	22

Health			
Indicator	Rank	Value	
Life Expectancy			
Riverside East (Including Sedamsville)	47	63.7 years	-
Riverside West (Near Saylor Park)	9	78.7	-
Disease Prevalence Estimates:	Rank of % w/Condition	% with Condition	Persons with Condition
Asthma	43	15.0%	352
Cancer	47	8.1%	191
Diabetes	36	18.1%	424
High Blood Pressure	37	44.5%	1,044
Heart Disease	47	11.9%	280
Kidney Disease	38	4.4%	103
Obesity	38	48.1%	1,128
Lack of Health Insurance	40	18.0%	423
Persons w/ Independent Living Difficulty	22	2.7%	63
Persons Living w/ Disability	44	20.3%	476

Ecosystems and Infrastructure		
Indicator	Rank	Value
Tree Canopy Coverage	23	26.7%
Greenness of Land Surface	35	43.7%
Percent Land in Parks and Greenspaces	45	3.4%
Impervious Surface	16	26%
Heat Island Exposure	11	0.13
Walkability	-	Above Average
Persons w/ Low-Income and Low Food Access	32	47.6%
Transit Accessibility	-	Excellent
Daytime Population vs. Resident Population	27	98.2%
Commuters Leaving Each Day	-	996
Commuters Using Public Transit	18	4.4%

Riverside & Sedamsville

Cincinnati Neighborhood Profile

Socio-Economic Indicators			
Indicator	Rank	%	#
Persons Living in Poverty			
Riverside East (Including Sedamsville)	31	30.3%	418
Riverside West (Near Saylor Park)	17	18.2%	176
SNAP Recipient Households			
Riverside East (Including Sedamsville)	33	33.9%	190
Riverside West (Near Saylor Park)	4	6.6%	39
Educational Attainment:			
Less than High School	-	17.6%	-
HS or Equivalent	-	19.5%	-
Some College	-	17.0%	-
Associate's Degree	-	4.9%	-
Bachelor's Degree or Higher	-	9.1%	-
Total Educational Attainment Ranking and Score (Max = 1)	34	34.5%	-
Extreme Housing Burdens			
Renter-Occupied Housing (as % of All Housing Units)	24	63.3%	727
Renters Spending 30% of Income or More on Rent + Utilities	29	29.9%	343
Renters Spending 50% of Income or More on Rent + Utilities	30	15.9%	182
Home Owners w/ Mortgage Spending 30% of Income or More on Mortgage + Utilities	37	23.6%	46
Average Energy Costs (as % of Income)	33	5.5%	-
Persons without Access to a Vehicle	23	7.6%	179

Built Environmental Hazards (Riverside Only)		
Indicator	Relative Exposure Level	Value
Traffic Exposure	Moderate	-
Potential Lead Paint Exposure (Houses Built pre-1960)	Moderate	51.65%
Cancer Risk from Air Pollution	Low	-
Respiratory Disease Risk from Air Pollution	Low	-
Proximity to Water Pollution Sources	Moderate	-
PM2.5 Levels in Air, µg/m3	Low	9.58
Ozone Concentration, ppb	Low	45.97
Diesel Particulate in Air, µg/m3	Moderate	0.89
Proximity to Superfund Sites	Low	-
Proximity to Potentially Toxic Industrial Activity	Low	-
Proximity to Hazardous Waste Treatment and Disposal Facilities	Low	-

Neighborhood Planning	
Indicator	Description
Community Councils	Riverside Civic & Welfare Club
Community Development Corporations	NA
Community Plans	Riverside Strategic Community Plan (2002)

Sedamsville

Cincinnati Neighborhood Profile

Ecosystems and Infrastructure (Sedamsville Only)

Indicator	Rank	Value
Tree Canopy Coverage	4	45.4%
Greenness of Land Surface	13	65.9%
Percent Land in Parks and Greenspaces	40	5.8%
Impervious Surface	5	17%
Heat Island Exposure	2	0.001

Built Environmental Hazards (Sedamsville Only)

Indicator	Relative Exposure Level	Value
Traffic Exposure	High	-
Potential Lead Paint Exposure (Houses Built pre-1960)	Very High	79.00%
Cancer Risk from Air Pollution	Moderate	-
Respiratory Disease Risk from Air Pollution	Moderate	-
Proximity to Water Pollution Sources	Moderate	-
PM2.5 Levels in Air, $\mu\text{g}/\text{m}^3$	Low	9.64
Ozone Concentration, ppb	Low	46.13
Diesel Particulate in Air, $\mu\text{g}/\text{m}^3$	High	0.95
Proximity to Superfund Sites	Low	-
Proximity to Potentially Toxic Industrial Activity	Moderate	-
Proximity to Hazardous Waste Treatment and Disposal Facilities	Low	-

